

Top tips to Include Autism in education



Clearly explain what students are learning and why.



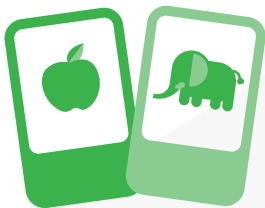
Allow more time for tasks or exams to account for different processing speeds.



Have structured activities for breaks and lunchtimes, or a quiet place to go.



To avoid corridor crushes, let the student and a buddy out of the lesson **a few minutes early.**



Think about different types of learning and adapt your teaching resources to **include all methods.**



Allow fidget toys or equipment to help with self-regulation and participation in learning.